



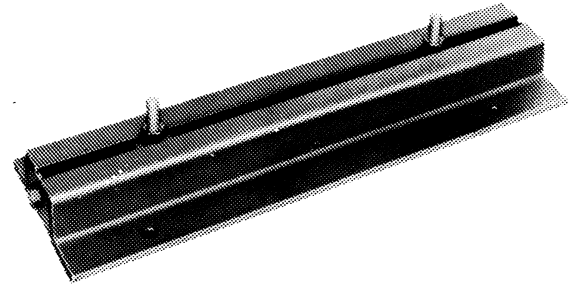
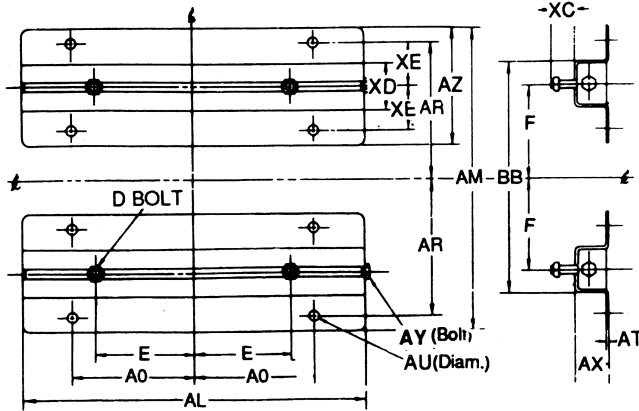
# OVERLY HAUTZ COMPANY

PO BOX 837 215 SOUTH WEST STREET LEBANON, OHIO 45036-0873  
 PHONE 513.932.0025 FAX 513.932.1688 WWW.OVERLYHAUTZ.COM

# NEMA

## ADJUSTABLE STEEL

## MOTOR RAILS



STYLE (2)

### STOCK RAILS

FRAME	O-H PART NUMBER	AL	AX	E	F** (MIN)	AO	AU	AT	AZ	XC	XD	XE	D BOLT	AY BOLT	TRAV.	APPROX. WT.*
440AC	A271	31-1/4	3	9	442	11	7/8	5/16	10-1/8	2-1/2	4-3/4	3-3/4	3/4x3	3/4x14	7-1/2	95
500AC	A257	35	3-1/2	10	502	12-1/2	1	5/16	12	3	5-3/4	4-1/2	7/8x3-1/2	7/8x16	8	130
580AC	A258	38-3/4	4	11-1/2	583	14-1/2	1	3/8	13	2-15/16	6-3/4	5	7/8x3-1/2	7/8x16	8-1/2	185
680AC	A259	42-1/2	4-1/4	13-1/2	680	13-1/2	1-1/8	3/8	10-3/4	3-7/16	5-3/4	4	1X4	7/8x16	9	180

\*\* Smallest Motor Frame Size which rails will accommodate.

\* LBS. PER PAIR

### NON STOCK RAILS

FRAME	O-H PART NUMBER	AL	AX	E	F** (MIN)	AO	AU	AT	AZ	XC	XD	XE	D BOLT	AY BOLT	TRAV.	APPROX. WT.*
440DC	A271DC	31-1/4	3	9	442	11	1-1/8	5/16	10-1/8	2-1/2	4-3/4	3-3/4	1x3-1/2	3/4x14	7-1/2	95
500DC	A257DC	35	3-1/2	10	502	12-1/2	1-1/4	5/16	12	3	5-3/4	4-1/2	1-1/8x3-1/2	7/8x16	8	130
580DC	A258DC	38-3/4	4	11-1/2	583	14-1/2	1-1/4	3/8	13	2-15/16	6-3/4	5	1-1/8x3-1/2	7/8x16	8-1/2	185
680DC	A259DC	42-1/2	4-1/4	13-1/2	680	13-1/2	1-3/8	3/8	10-3/4	3-7/16	5-3/4	4	1-1/8x4	7/8x16	9	180

\*\* Smallest Motor Frame Size which rails will accommodate.

\* LBS. PER PAIR

DIMENSIONS ARE IN INCHES: Rails are furnished with one coat of corrosion-resistant gray primer and zinc plated nuts and bolts.

Furnished in pairs unless otherwise specified.

The liability of the Overly-Hautz Company to the purchaser is limited to replacement of defective materials supplied. One year from the date of our shipment all liability shall terminate. There are no warranties which extend beyond the description on the face hereof.

### DIMENSION SHEET MR-200-2

CERTIFIED FOR: \_\_\_\_\_

FRAME \_\_\_\_\_ BY \_\_\_\_\_ DATE \_\_\_\_\_