



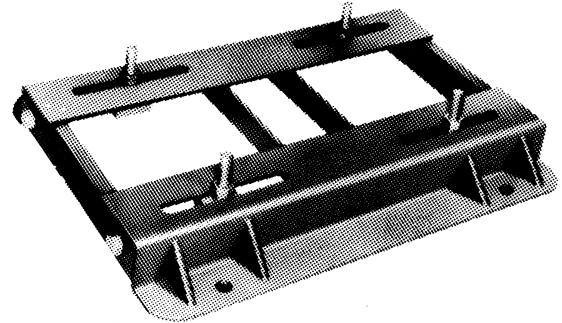
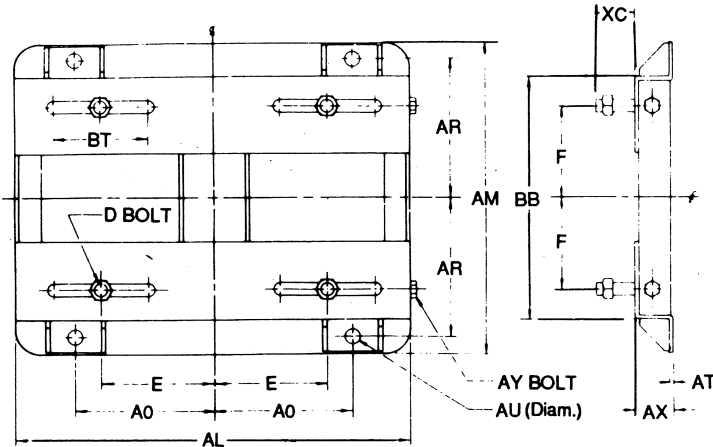
OVERLY HAUTZ COMPANY

PO BOX 837 215 SOUTH WEST STREET LEBANON, OHIO 45036-0873
 PHONE 513.932.0025 FAX 513.932.1688 WWW.OVERLYHAUTZ.COM

NEMA

STEEL ADJUSTABLE

MOTOR BASES



STYLE C

STOCK BASES

FRAME & PART NO.	AL	AM	AX	BB	E	F	A0	AR	AU	BT	AT	XC	D BOLT	AY BOLT	APPROX. WT. (LBS)
504	35	28	3-1/2	20-3/4	10	8	12-1/2	12-1/2	1	8	5/16	3	7/8x3-1/2	7/8x16	132
505	35	30	3-1/2	22-3/4	10	9	12-1/2	13-1/2	1	8	5/16	3	7/8x3-1/2	7/8x16	135

NON STOCK BASES

FRAME & PART NO.	AL	AM	AX	BB	E	F	A0	AR	AU	BT	AT	XC	D BOLT	AY BOLT	APPROX. WT. (LBS)
444DC	31-1/4	24-5/8	3	19-1/4	9	7-1/4	11	11	1-1/8	7-1/2	5/16	3	1x3-1/2	3/4x14	83
445DC	31-1/4	26-5/8	3	21-1/4	9	8-1/4	11	12	1-1/8	7-1/2	5/16	3	1x3-1/2	3/4x14	85
446DC	31-1/4	28-1/8	3	22-3/4	9	9	11	12-3/4	1-1/8	7-1/2	5/16	3	1x3-1/2	3/4x14	87
447DC	31-1/4	30-1/8	3	24-3/4	9	10	11	13-3/4	1-1/8	7-1/2	5/16	3	1x3-1/2	3/4x14	89
503	35	26	3-1/2	18-3/4	10	7	12-1/2	11-1/2	1	8	5/16	3	7/8x3-1/2	7/8x16	130
504DC	35	28	3-1/2	20-3/4	10	8	12-1/2	12-1/2	1-1/4	8	5/16	3	1-1/8x3-1/2	7/8x16	132
505DC	35	30	3-1/2	22-3/4	10	9	12-1/2	13-1/2	1-1/4	8	5/16	3	1-1/8x3-1/2	7/8x16	135
506	35	32	3-1/2	24-3/4	10	10	12-1/2	14-1/2	1	8	5/16	3	7/8x3-1/2	7/8x16	138
506DC	35	32	3-1/2	24-3/4	10	10	12-1/2	14-1/2	1-1/4	8	5/16	3	1-1/8x3-1/2	7/8x16	138
507	35	34	3-1/2	26-3/4	10	11	12-1/2	15-1/2	1	8	5/16	3	7/8x3-1/2	7/8x16	141
507DC	35	34	3-1/2	26-3/4	10	11	12-1/2	15-1/2	1-1/4	8	5/16	3	1-1/8x3-1/2	7/8x16	141
508	35	37	3-1/2	29-3/4	10	12-1/2	12-1/2	17	1	8	5/16	3	7/8x3-1/2	7/8x16	145
583	38-3/4	29	4	20-3/4	11-1/2	8	14-1/2	13	1	8-1/2	3/8	2-15/16	7/8x3-1/2	7/8x16	178
583DC	38-3/4	29	4	20-3/4	11-1/2	8	14-1/2	13	1-1/4	8-1/2	3/8	2-15/16	1-1/8x3-1/2	7/8x16	178
584	38-3/4	31	4	22-3/4	11-1/2	9	14-1/2	14	1	8-1/2	3/8	2-15/16	7/8x3-1/2	7/8x16	182
584DC	38-3/4	31	4	22-3/4	11-1/2	9	14-1/2	14	1-1/4	8-1/2	3/8	2-15/16	1-1/8x3-1/2	7/8x16	182
585	38-3/4	33	4	24-3/4	11-1/2	10	14-1/2	15	1	8-1/2	3/8	2-15/16	7/8x3-1/2	7/8x16	185
585DC	38-3/4	33	4	24-3/4	11-1/2	10	14-1/2	15	1-1/4	8-1/2	3/8	2-15/16	1-1/8x3-1/2	7/8x16	185
682	42-1/2	28-3/4	4-1/4	23	13-1/2	9	13-1/2	13	1-1/8	9	3/8	3-7/16	1x4	7/8x16	184
682DC	42-1/2	28-3/4	4-1/4	23	13-1/2	9	13-1/2	13	1-3/8	9	3/8	3-7/16	1-1/8x4	7/8x16	184
683	42-1/2	30-3/4	4-1/4	25	13-1/2	10	13-1/2	14	1-1/8	9	3/8	3-7/16	1x4	7/8x16	188
683DC	42-1/2	30-3/4	4-1/4	25	13-1/2	10	13-1/2	14	1-3/8	9	3/8	3-7/16	1-1/8x4	7/8x16	188
684	42-1/2	32-3/4	4-1/4	27	13-1/2	11	13-1/2	15	1-1/8	9	3/8	3-7/16	1x4	7/8x16	192
684DC	42-1/2	32-3/4	4-1/4	27	13-1/2	11	13-1/2	15	1-3/8	9	3/8	3-7/16	1-1/8x4	7/8x16	192
685	42-1/2	35-3/4	4-1/4	30	13-1/2	12-1/2	13-1/2	16-1/2	1-1/8	9	3/8	3-7/16	1x4	7/8x16	195
685DC	42-1/2	35-3/4	4-1/4	30	13-1/2	12-1/2	13-1/2	16-1/2	1-3/8	9	3/8	3-7/16	1-1/8x4	7/8x16	195

DIMENSIONS ARE IN INCHES: Bases are furnished with one coat of corrosion-resistant gray primer and zinc plated nuts and bolts.

Bases listed may also be used if the motor frame is succeeded by S, T, U, US or any letter combination as long as the motor complies with N.E.M.A.

The liability of the Overly-Hautz Company to the purchaser is limited to replacement of defective materials supplied. One year from the date of our shipment all liability shall terminate. There are no warranties which extend beyond the description on the face hereof.

DIMENSION SHEET MB-200-C

CERTIFIED FOR: _____

FRAME _____ BY _____ DATE _____